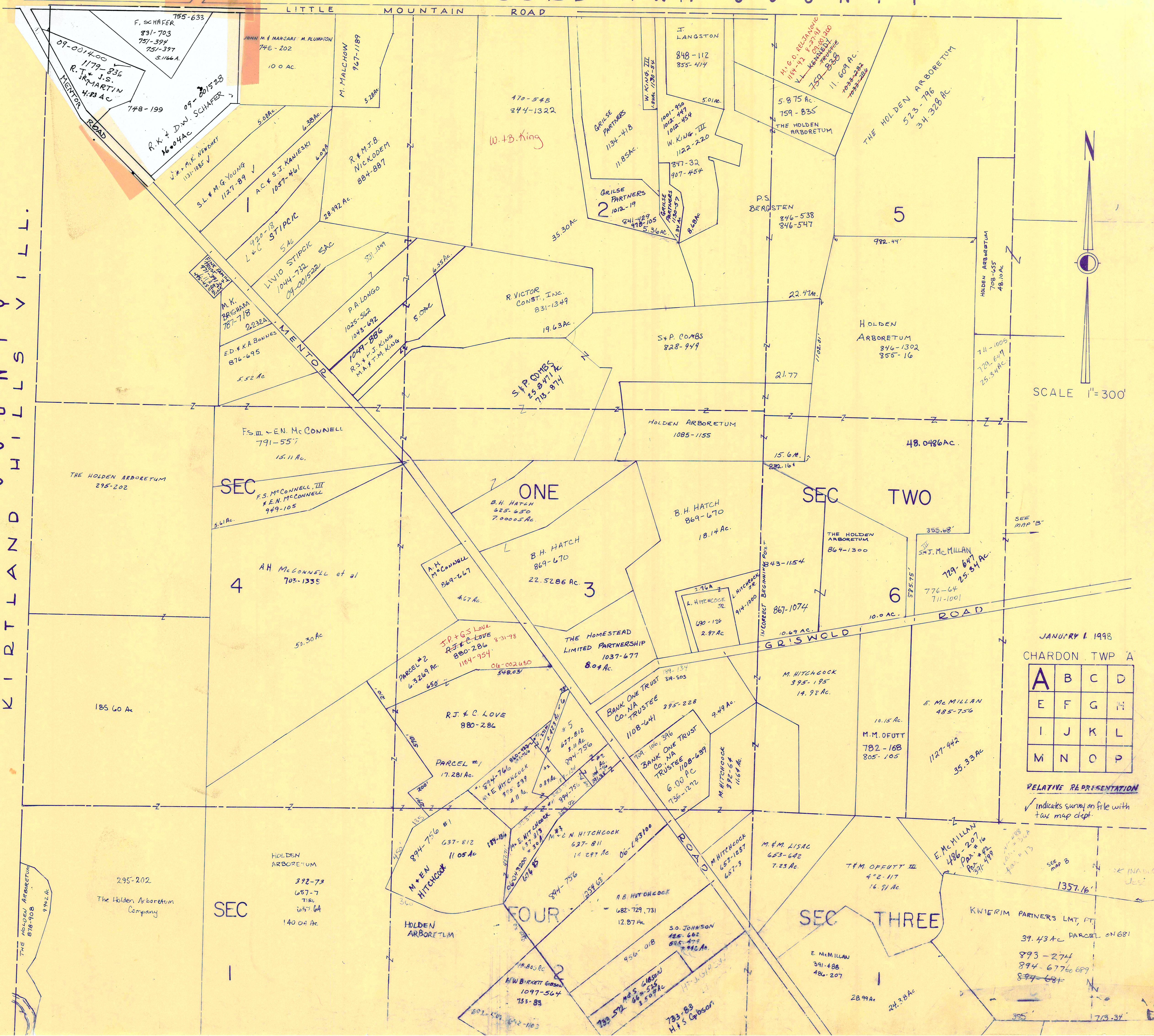




L A K E C O N C O R D T W P. C O U N T Y

L A K E R I B T L A N D C O U N T Y I L L.



SCALE 1"=300'

JANUARY 1 1998  
CHARDON TWP A

A	B	C	D
E	F	G	H
I	J	K	L
M	N	O	P

RELATIVE REPRESENTATION  
✓ indicates survey on file with tax map dept

THE HOLDEN ARBORETUM  
878-908  
974.2 AC

295-202  
The Holden Arboretum Company  
392-73  
687-7  
794  
647-64  
140.04 AC

SEC 1

HOLDEN ARBORETUM  
392-73  
687-7  
794  
647-64  
140.04 AC

HOLDEN ARBORETUM

SEC FOUR

H.W. BIRKETT GARDEN  
1097-564  
733-83

S.O. JOHNSON  
425-662  
885-473  
942 AC

SEC THREE

E. Mc MILLAN  
391-488  
486-207

KNIERIM PARTNERS LMT, PT

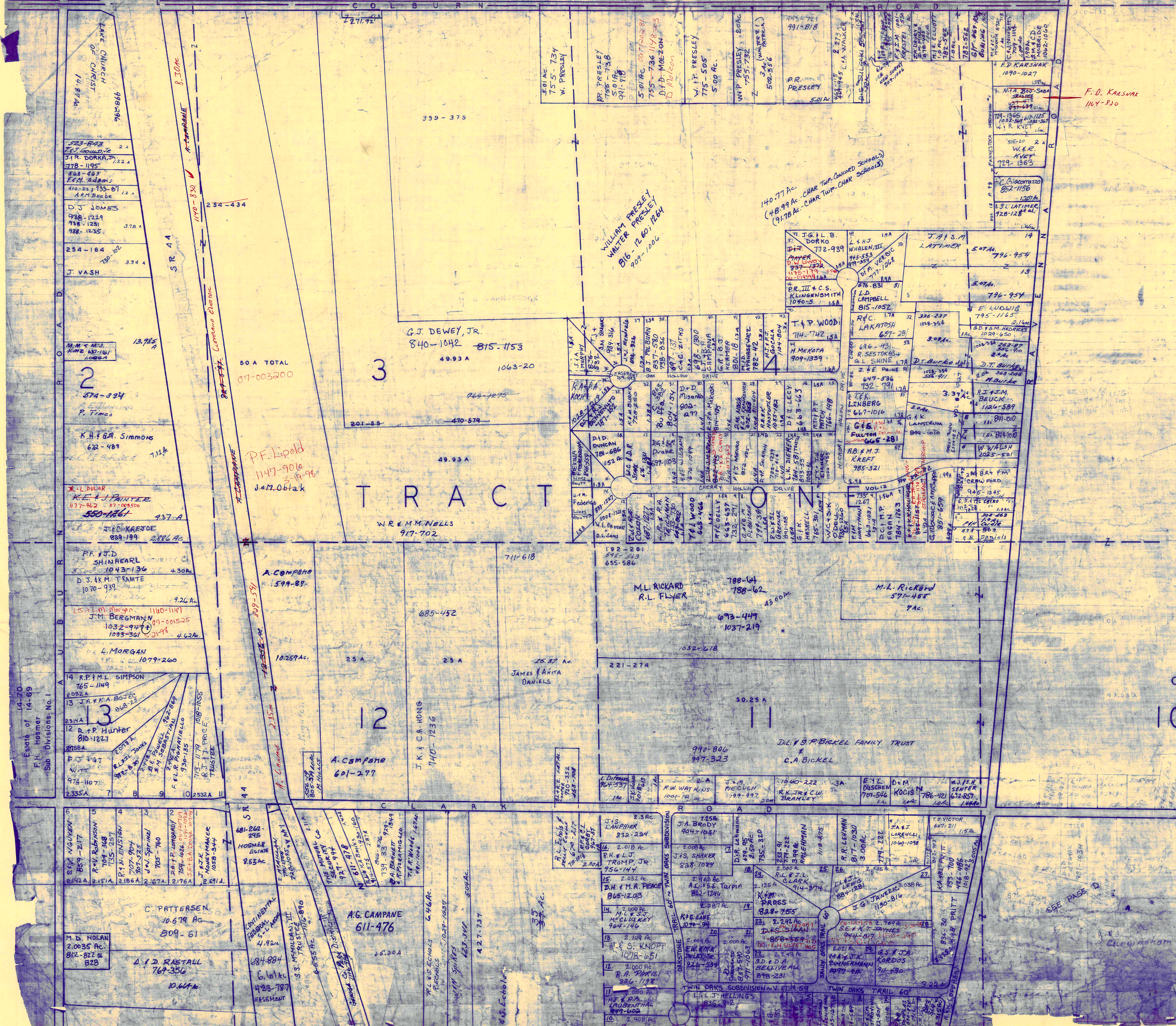
39.43 AC PARCEL ON 681  
893-274  
894-677  
897-681

1357.16'

713.34'



L A K E C O U N T Y



F. O. KARSNAK  
1164-830

WILLIAM PRESLEY  
WALTER PRESLEY  
816 - 12 601 1244  
907-1206

140.77 Ac. - CHAR TWP. CHARDON SCHOOLS  
140.99 Ac. - CHAR TWP. CHARDON SCHOOLS  
91.70 Ac. - CHAR TWP. CHARDON SCHOOLS

P.F. Lipold  
1147-906  
3-14-98  
J.M. Obitak

A. Campano  
599-897

A. Campano  
601-277

T R A C T

SCALE 1" = 300'

JAN. 1, 1998

A	B	C	D
E	F	G	H
I	J	K	L
M	N	O	P

RELATIVE REPRESENTATION  
CHARDON TWP.

✓ indicates survey  
on file with tax map  
Def.

\* Inadequate  
description

SEE PAGE D



KIRTLAND HILLS  
KIRTLAND TWP.  
CHARDON TWP.



JANUARY, 1993  
RELATIVE REPRESENTATION  
CHARDON TWP E

A	B	C	D
E	F	G	H
I	J	K	L
M	N	O	P

\* Inadequate description  
/ indicates survey on file with town map dept.



SECTION THREE

TRACT FOUR

TRACT ONE

TRACT TWO

CHARDON TWP T

A	B	C	D
E	F	G	H
I	J	K	L
M	N	O	P

JANUARY 1, 1988  
RELATIVE REPRESENTATION

\* Inadequate description

indicates Survey on file with tax map dept.

SCALE 1" = 300'





Indicates survey on file with Tax Map Dept  
\* Inadequate description

SCALE 1" = 300'  
JAN. 1, 1998

A	B	C	D
E	F	G	H
I	J	K	L
M	N	O	P

RELATIVE REPRESENTATION  
CHARDON TWP

579-461  
R. B. HERNANDEZ  
J.T. & C.A. ROCHE  
8Ac  
1398.73'  
1428-73'  
R.J. PARKS  
934-236  
20.227Ac  
16  
parcel # 12  
48.84Ac  
24.52Ac  
S.S. McMillan Trustee  
ESTATE OF H. HOSMER  
681-262, 720-1095  
W. NELSON  
6.00Ac  
797-615  
825-815  
927-1179  
D.J. IBOLD  
1023-120  
R.J. ARM STRASHEWSKY  
1089-1179  
D.A. FABIO  
C. VAN DUSEN  
1027-517  
P.E. KIEBLER III  
977-823  
M.J. SWEENEY II  
1041-693  
T. REBINI, TRUSTEE  
12  
J.E. & L.L. MARCH  
1139-946  
G.E. HODGE  
1046-113  
15  
3.12Ac  
3.787Ac  
1041-693  
12  
1139-946  
1046-113  
15  
3.12Ac  
3.787Ac  
1041-693  
12  
1139-946  
1046-113  
15

516-325  
R. J. PARKS  
934-236  
20.227Ac  
S.S. McMillan Trustee  
ESTATE OF H. HOSMER  
681-262, 720-1095  
W. NELSON  
6.00Ac  
797-615  
825-815  
927-1179  
D.J. IBOLD  
1023-120  
R.J. ARM STRASHEWSKY  
1089-1179  
D.A. FABIO  
C. VAN DUSEN  
1027-517  
P.E. KIEBLER III  
977-823  
M.J. SWEENEY II  
1041-693  
T. REBINI, TRUSTEE  
12  
J.E. & L.L. MARCH  
1139-946  
G.E. HODGE  
1046-113  
15  
3.12Ac  
3.787Ac  
1041-693  
12  
1139-946  
1046-113  
15

516-325  
R. J. PARKS  
934-236  
20.227Ac  
S.S. McMillan Trustee  
ESTATE OF H. HOSMER  
681-262, 720-1095  
W. NELSON  
6.00Ac  
797-615  
825-815  
927-1179  
D.J. IBOLD  
1023-120  
R.J. ARM STRASHEWSKY  
1089-1179  
D.A. FABIO  
C. VAN DUSEN  
1027-517  
P.E. KIEBLER III  
977-823  
M.J. SWEENEY II  
1041-693  
T. REBINI, TRUSTEE  
12  
J.E. & L.L. MARCH  
1139-946  
G.E. HODGE  
1046-113  
15  
3.12Ac  
3.787Ac  
1041-693  
12  
1139-946  
1046-113  
15

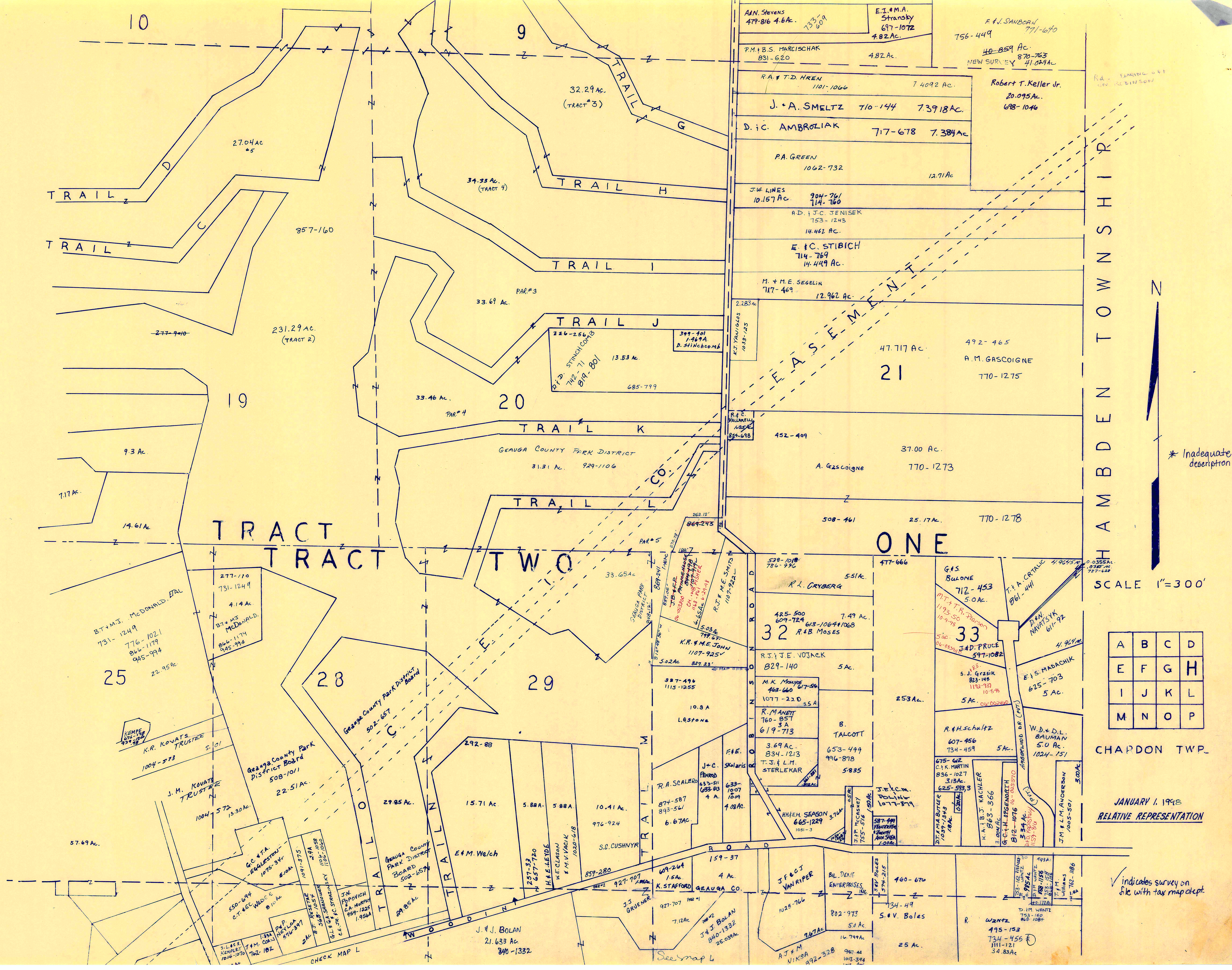
516-325  
R. J. PARKS  
934-236  
20.227Ac  
S.S. McMillan Trustee  
ESTATE OF H. HOSMER  
681-262, 720-1095  
W. NELSON  
6.00Ac  
797-615  
825-815  
927-1179  
D.J. IBOLD  
1023-120  
R.J. ARM STRASHEWSKY  
1089-1179  
D.A. FABIO  
C. VAN DUSEN  
1027-517  
P.E. KIEBLER III  
977-823  
M.J. SWEENEY II  
1041-693  
T. REBINI, TRUSTEE  
12  
J.E. & L.L. MARCH  
1139-946  
G.E. HODGE  
1046-113  
15  
3.12Ac  
3.787Ac  
1041-693  
12  
1139-946  
1046-113  
15

516-325  
R. J. PARKS  
934-236  
20.227Ac  
S.S. McMillan Trustee  
ESTATE OF H. HOSMER  
681-262, 720-1095  
W. NELSON  
6.00Ac  
797-615  
825-815  
927-1179  
D.J. IBOLD  
1023-120  
R.J. ARM STRASHEWSKY  
1089-1179  
D.A. FABIO  
C. VAN DUSEN  
1027-517  
P.E. KIEBLER III  
977-823  
M.J. SWEENEY II  
1041-693  
T. REBINI, TRUSTEE  
12  
J.E. & L.L. MARCH  
1139-946  
G.E. HODGE  
1046-113  
15  
3.12Ac  
3.787Ac  
1041-693  
12  
1139-946  
1046-113  
15

516-325  
R. J. PARKS  
934-236  
20.227Ac  
S.S. McMillan Trustee  
ESTATE OF H. HOSMER  
681-262, 720-1095  
W. NELSON  
6.00Ac  
797-615  
825-815  
927-1179  
D.J. IBOLD  
1023-120  
R.J. ARM STRASHEWSKY  
1089-1179  
D.A. FABIO  
C. VAN DUSEN  
1027-517  
P.E. KIEBLER III  
977-823  
M.J. SWEENEY II  
1041-693  
T. REBINI, TRUSTEE  
12  
J.E. & L.L. MARCH  
1139-946  
G.E. HODGE  
1046-113  
15  
3.12Ac  
3.787Ac  
1041-693  
12  
1139-946  
1046-113  
15

516-325  
R. J. PARKS  
934-236  
20.227Ac  
S.S. McMillan Trustee  
ESTATE OF H. HOSMER  
681-262, 720-1095  
W. NELSON  
6.00Ac  
797-615  
825-815  
927-1179  
D.J. IBOLD  
1023-120  
R.J. ARM STRASHEWSKY  
1089-1179  
D.A. FABIO  
C. VAN DUSEN  
1027-517  
P.E. KIEBLER III  
977-823  
M.J. SWEENEY II  
1041-693  
T. REBINI, TRUSTEE  
12  
J.E. & L.L. MARCH  
1139-946  
G.E. HODGE  
1046-113  
15  
3.12Ac  
3.787Ac  
1041-693  
12  
1139-946  
1046-113  
15

516-325  
R. J. PARKS  
934-236  
20.227Ac  
S.S. McMillan Trustee  
ESTATE OF H. HOSMER  
681-262, 720-1095  
W. NELSON  
6.00Ac  
797-615  
825-815  
927-1179  
D.J. IBOLD  
1023-120  
R.J. ARM STRASHEWSKY  
1089-1179  
D.A. FABIO  
C. VAN DUSEN  
1027-517  
P.E. KIEBLER III  
977-823  
M.J. SWEENEY II  
1041-693  
T. REBINI, TRUSTEE  
12  
J.E. & L.L. MARCH  
1139-946  
G.E. HODGE  
1046-113  
15  
3.12Ac  
3.787Ac  
1041-693  
12  
1139-946  
1046-113  
15



\* Inadequate description

SCALE 1"=300'

A	B	C	D
E	F	G	H
I	J	K	L
M	N	O	P

CHARDON TWP.

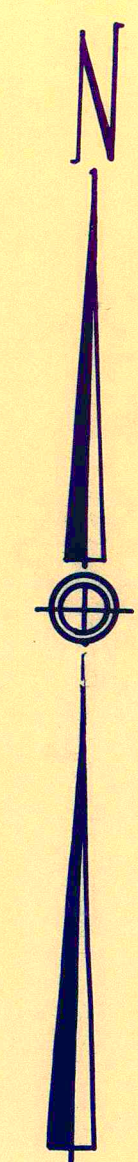
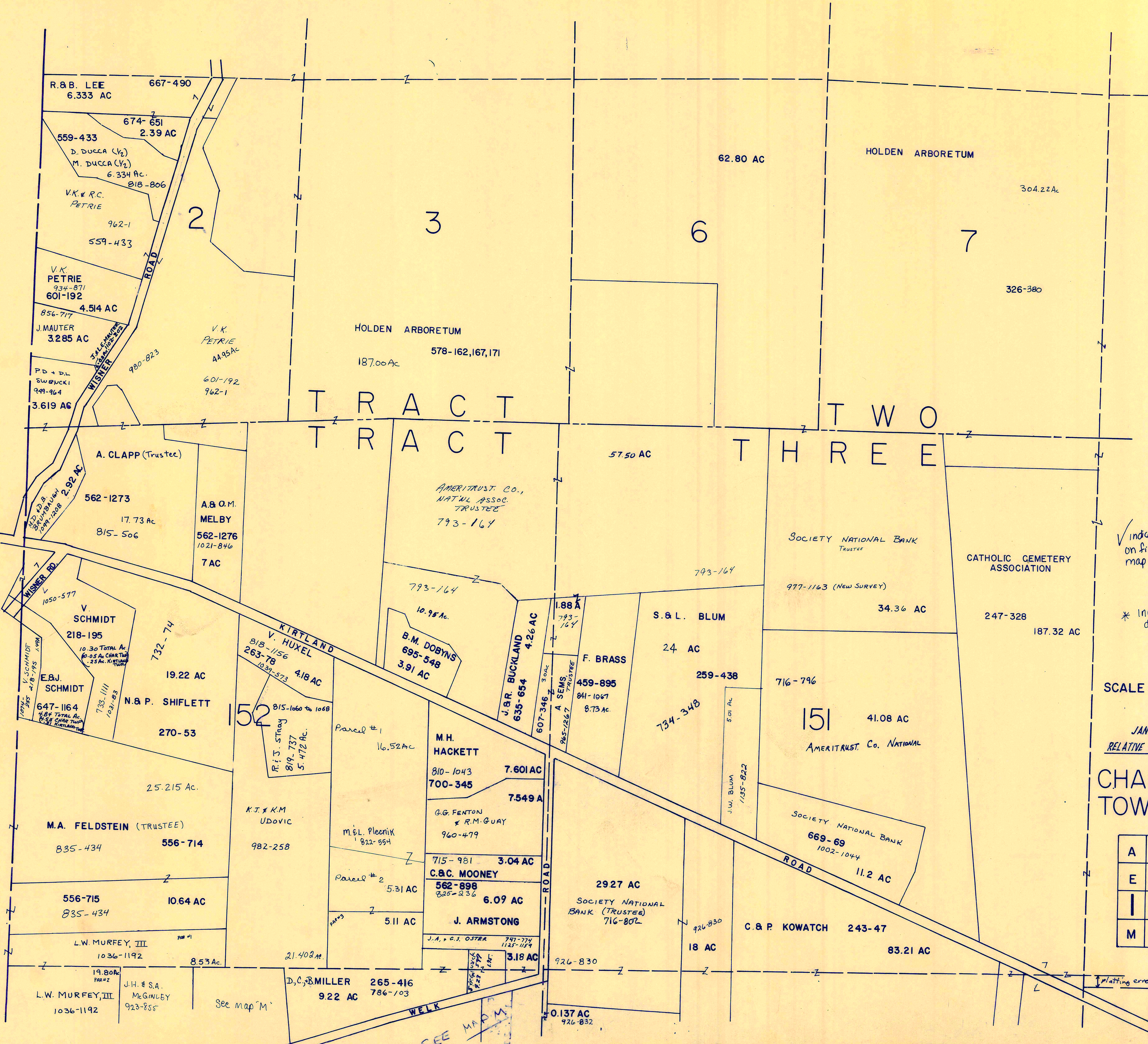
JANUARY 1, 1998  
RELATIVE REPRESENTATION

Indicates survey on file with tax map dept

COUNTY

LAKE

KIRTLAND TOWNSHIP



✓ indicates survey on file with tax map dept.

\* inadequate description

SCALE: 1" = 300'

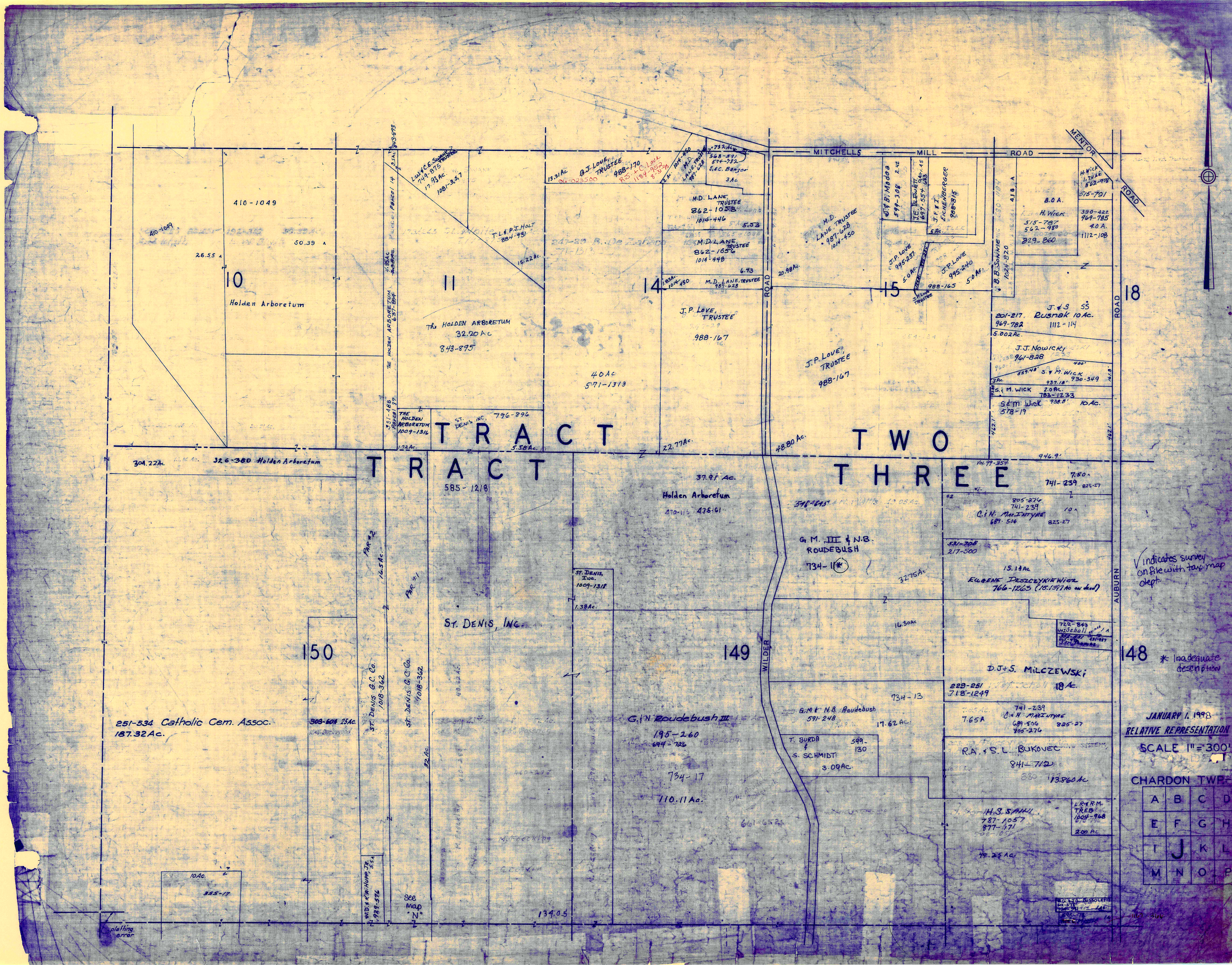
JANUARY 1, 1998  
RELATIVE REPRESENTATION

CHARDON TOWNSHIP "1"

A	B	C	D
E	F	G	H
I	J	K	L
M	N	O	P

plating error

SEE MAP M



TRACT

TWO  
THREE

251-534 Catholic Cem. Assoc.  
187.32 Ac.

ST. DENIS, INC.

G.M. & N.B. Roudebush III

G.M. III & N.B. ROUDEBUSH  
734-11\*

D.J. & S. MILCZEWSKI

R.A. & S.L. BUKOVEC

H.S. SANU

✓ indicates survey on file with tax map dept

\* inadequate description

JANUARY 1, 1993  
RELATIVE REPRESENTATION

SCALE 1" = 300'

CHARDON TWP

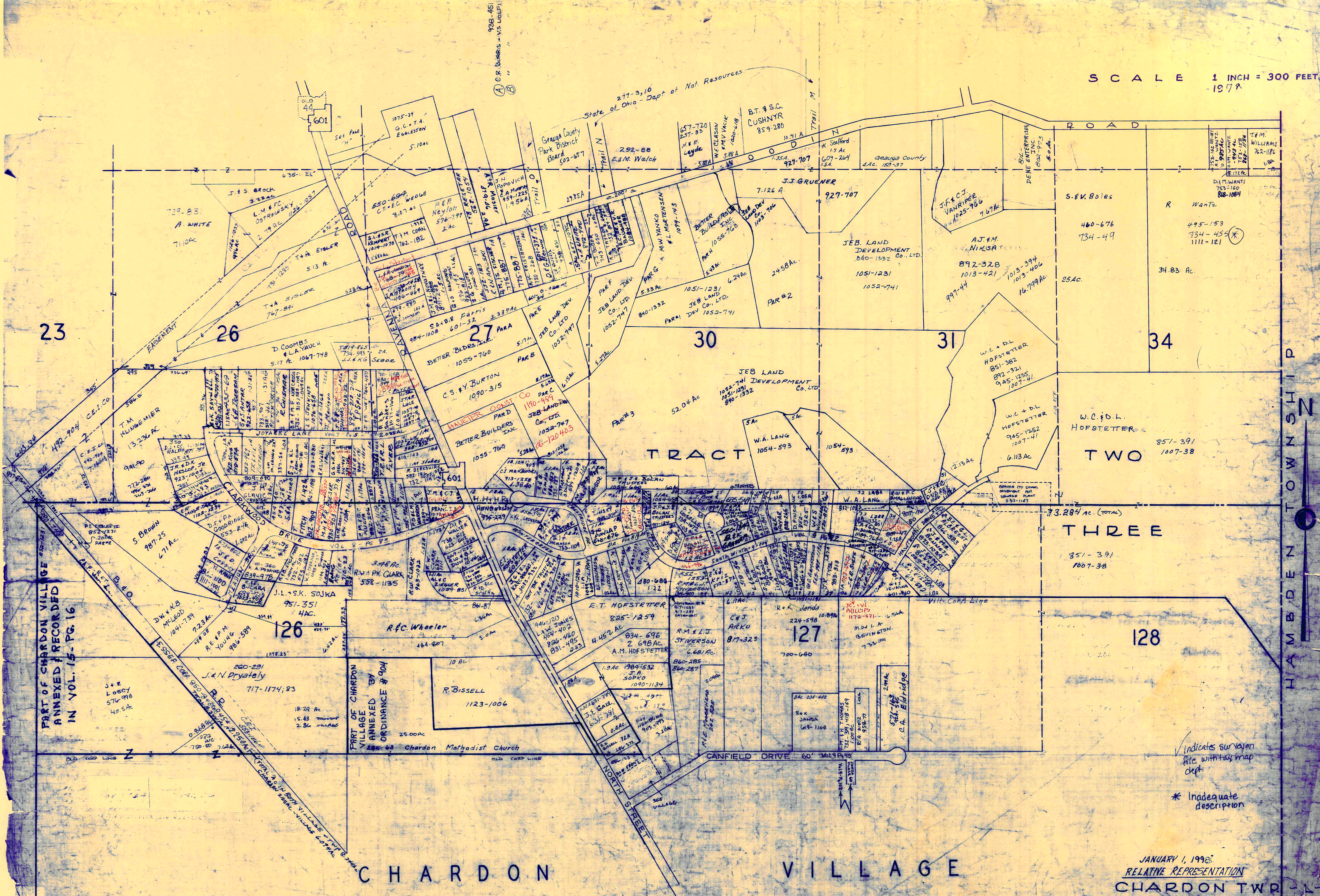
A	B	C	D
E	F	G	H
I	J	K	L
M	N	O	P

plotting error

See map N



SCALE 1 INCH = 300 FEET  
-1978



23

26

27

30

31

34

TRACT

THREE

128

CHARDON VILLAGE

JANUARY 1, 1992  
RELATIVE REPRESENTATION  
CHARDON TWP

A	B	C	D
E	F	G	H
I	J	K	L
M	N	O	P

PART OF CHARDON VILLAGE ANNEXED & RECORDED IN VOL. 15 - PG. 16

PART OF CHARDON VILLAGE ANNEXED BY ORDINANCE # 904

Indicates survey site with tax map dept.  
\* Inadequate description

938-451  
C. S. BURRIS - VS. JOLIE

State of Ohio - Dept of Nat. Resources  
277-3,10

B.T. & S.C. CUSHNYR  
859-280

J.J. GRUENER  
927-707

J.F. & C.J. VANRIPER  
1025-766

S.E.V. Boles  
460-676  
734-49

R. WANTS  
495-153  
734-454  
1111-121

C.S. & Y. BURTON  
1090-315

BETTER BUILDERS INC.  
1055-760

JEB LAND DEVELOPMENT CO. LTD.  
1052-747

W.A. LANG  
1054-593

W.C. & D.L. HOFSTETTER  
851-362  
892-321  
945-1255  
1007-41

W.C. & D.L. HOFSTETTER  
851-391  
1007-38

R.F.C. Wheeler  
464-207

R. BISSELL  
1123-1006

E.T. HOFSTETTER  
825-1259

A.M. HOFSTETTER  
834-696  
2-698 AC.

R.M. & L.J. STIVERTSON  
817-323

127  
700-640

J.C. & L. PHILLIPS  
1072-971

M.D. L.A. BEVINSTON  
723-101

J. & E. LOBEY  
576-998  
40.5 AC.

J. & N. DRYATELY  
717-1174, 83

126  
18.22 AC.  
15.43 Township  
2.86 Village

25.00 AC.

Chardon Methodist Church

10 AC.

4.452 AC.

1.3 AC.

0.8 AC.

2.0 AC.

2.0 AC.

3.4 AC.

2.0 AC.

2.0 AC.

2.0 AC.

2.0 AC.

2.0 AC.

2.0 AC.

2.0 AC.

2.0 AC.

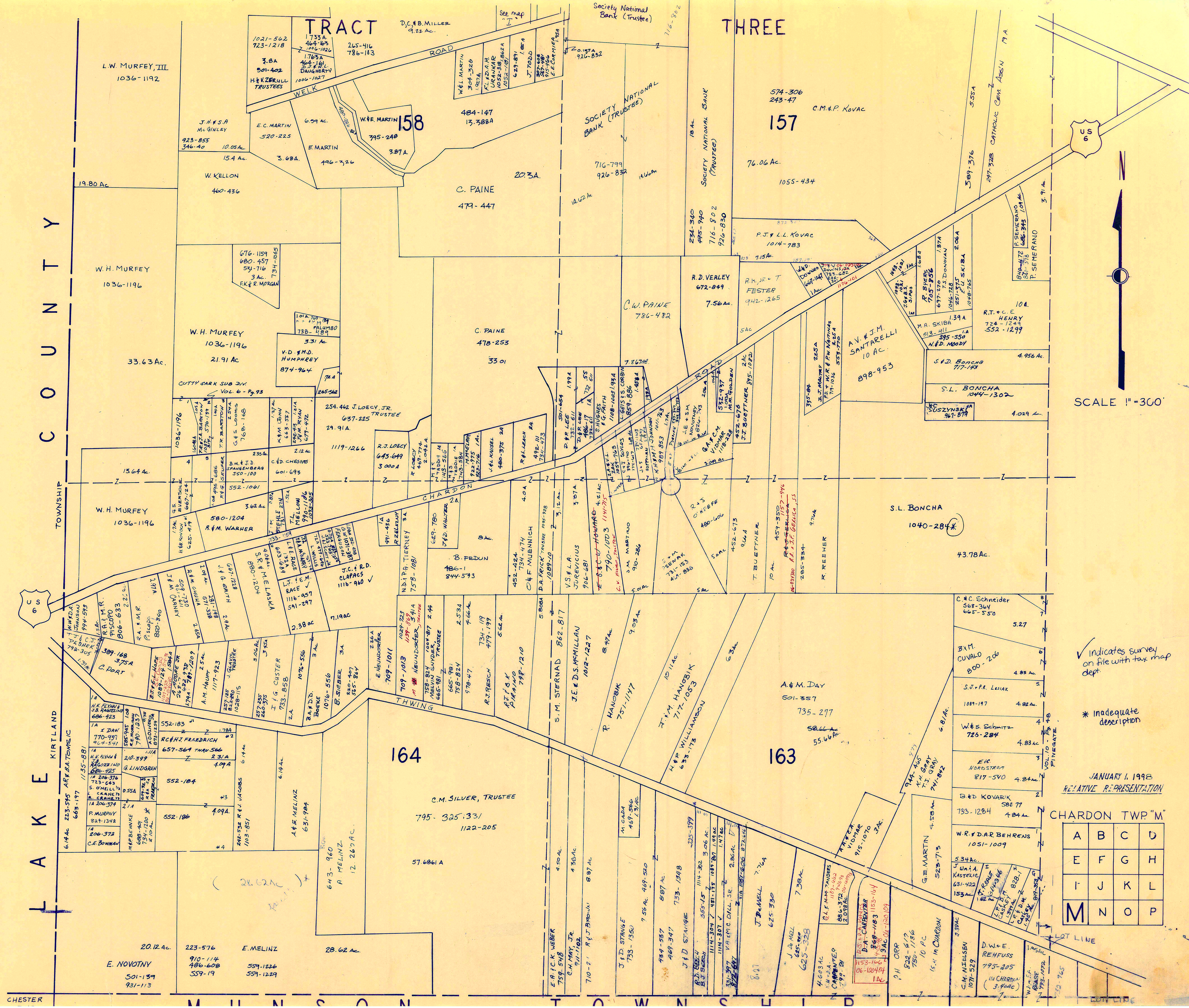
OLD COOP LINE

OLD COOP LINE

CANFIELD DRIVE 60' W/19 P/45

NORTH STREET



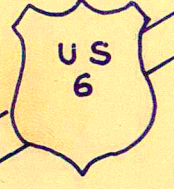


C O U N T Y

T O W N S H I P

L A K E K I R T L A N D

CHESTER



SCALE 1"=300'

✓ indicates survey on file with tax map dept.

\* inadequate description

JANUARY 1, 1998  
RELATIVE REPRESENTATION

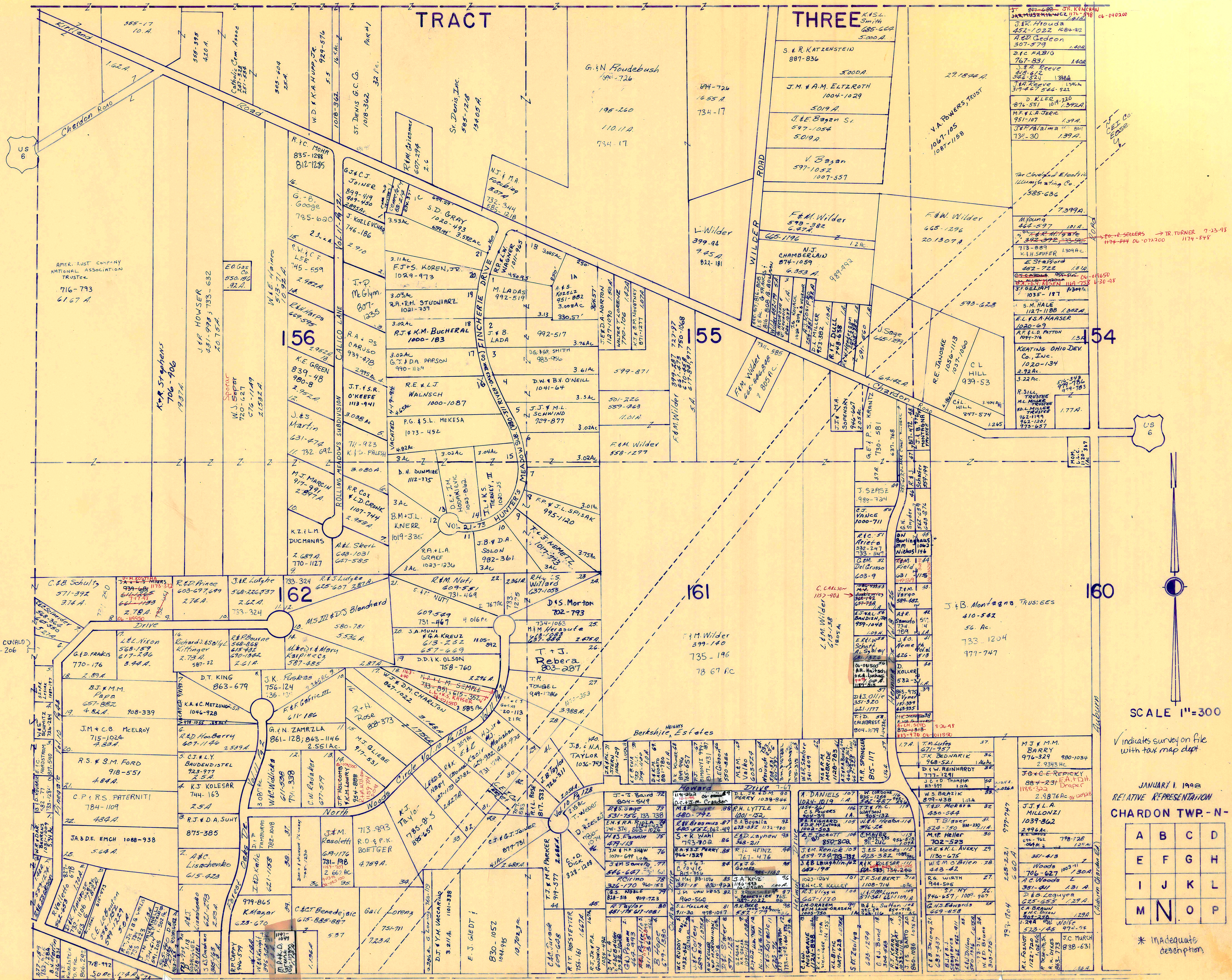
CHARDON TWP "M"

A	B	C	D
E	F	G	H
I	J	K	L
M	N	O	P

LOT LINE

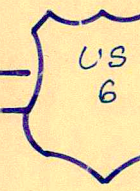
CHESTER

LOT LINE



TRACT

THREE



SCALE 1"=300

Indicates survey on file with tax map dept.

JANUARY 1, 1998  
RELATIVE REPRESENTATION  
CHARDON TWP. - N-

A	B	C	D
E	F	G	H
I	J	K	L
M	N	O	P

\* inadequate description

AMER. RUST COMPANY  
NATIONAL ASSOCIATION  
TRUSTEE  
716-793  
6167 A.

J.R. Frouda  
452-1022 1084-92  
A.B. Gooden  
307-579  
D.C. FABIO  
767-831 140A  
J.E. Reeve  
418-612 1388A  
J.R. Reeve  
319-427 546-522  
D. KLER  
876-551 10A 1392A  
M.F. L.A. JERIC  
951-107 139A  
J.P. Palma  
734-30 139A.

RE JANOSKE  
1050-1113  
1037-1060  
CL HILL  
939-53  
C.L. HILL  
947-574  
1245

J.B. MONTANA TRUSTEES  
410-542  
56 Ac.  
733-1204  
977-747

M.J. M.M. BARRY  
976-329 980-1034  
2 9343 Hc.  
J.B. & G. REPICKY  
884-231 E.A. & D.H.  
1185-522  
2,9876 Ac. 1029A  
J.T. & L.A. MILLONZI  
1039-862  
2,994 Ac.  
M.P. Heller  
702-523  
M.E. & R.L. Avery  
524-750 810-210 1A  
782-442  
R. WIRTH  
944-505  
R. WIRTH  
946-657 1009-467  
D.H. Edwards  
669-658  
C.A. BRAUN  
M.C. DUNN  
129A  
J.C. MURCH  
838-631

FOR SELLERS → TR. TURNER 7-25-98  
1174-848 06-072200 1174-848

11650  
11650  
11650

1177A

1180-347

1180-347

1180-347

1180-347

1180-347

1180-347

1180-347

1180-347

1180-347

1180-347

1180-347

1180-347

1180-347

1180-347

1180-347

1180-347

1180-347

1180-347

